



DENALI Plow Mount MA11136 Kawasaki Brute Force 650/750i

Thank you for purchasing our DENALI plow mount. You now own a premium custom plow mount to allow you to use your plow with your ATV. Please note the following instructions and heed all warnings.

- Your ATV and/or plow system can cause death or injury, please use caution and common sense when operating your unit.
- Read your Plow Operator Manual, your Winch Operator Manual, and all warning labels before operating your ATV.
- Operate your ATV at a walking speed with the blade installed. Do not exceed 5 mph (8 km/h), even with the blade up.
- Do not operate the ATV on slopes greater than 10 degrees with the plow installed.
- Always lower the plow to the down position before leaving your ATV unattended.

SEVERE INJURY OR DEATH MAY RESULT IF YOU ARE NEGLIGENT.



PARTS LIST

- A1- 1- Plow Mount
- B1- 4- 5/16-18 x 1 3/8" x 2" u-bolt (42018)
- B2- 8- 5/16" Flat Washer
- B3- 8- 5/16-18 Lock Nut

Plow Mount Assembly:

1. Remove the four skid plate bolts, Figure 1. Loosen the front two skid plate bolts, and remove the skid plate from the vehicle.
2. Place the plow mount (A1) on the skid plate, Figure 2.
3. Center the plow mount (A1) and place it as shown, Figure 3. Mark the four-hole locations from the plow mount onto the skid plate, Figure 2.
4. Use the 3/8" drill to make the four holes in the skid plate, Figure 4.

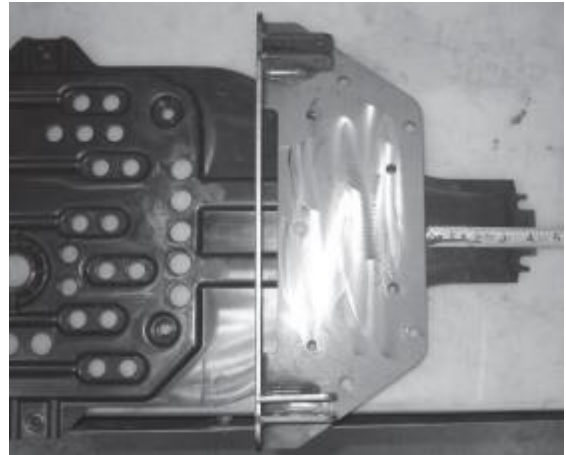


Figure 2



Figure 1



Figure 3



Figure 4

5. Reattach the skid plate to the vehicle. Place the supplied u-bolts (B1) around the tubes and through the drilled holes in the skid plate, Figure 5.



Figure 5

6. Fasten the plow mount to the vehicle with the u-bolts, flat washers (B2) and lock nuts (B3), Figure 6. Align the plow mount with the bike. Trim the skid plate holes if necessary. Tighten the u-bolts to 10lb ft (14 N-m).

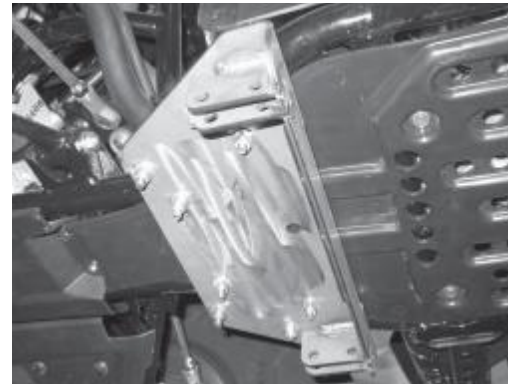


Figure 6

Plow Installation:

Slide the plow into position with the tubes under the ATV.

Lift the end of the tube assembly into position so the holes in the Tube Wings line up with the 3/8" holes in the frame brackets (Fig. 2).

If using a winch, mount the plow in the rear holes using the 3/8" pins that came with the plow kit. If using the electric actuator or manual lift, mount the plow in the forward holes.

A Phillips head screwdriver may be used to align the holes.